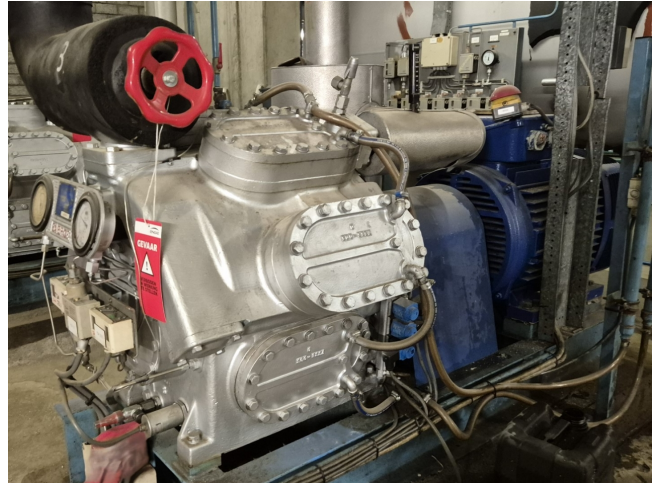


Sabroe SMC 108L

Specifications

Marca	Sabroe
Tipo	SMC 108L
Refrigerante	NH 3 (ammonia)
kW at +10°C/+40°C	724,8
kW at 0°C/+40°C	479,4
kW at -5°C/+40°C	381,5
kW at -10°C/+40°C	298,1
Piston Descargador	✓
Control de capacidad	✓
Sober Bancada	✓
Presostatos	✓
Manómetros de Presion	✓
Separador de aceite	✓
Mirilla	✓
Valvula Solenoide	✓
Comentarios	Y.o.b. 1986
Comentarios	*Capacity based on R717 (Ammonia).
Tamaños	2200x1000x1700 mm (LxWxH)
Stock	1



Description

Used Sabroe SMC 108L

Used Sabroe SMC 108L reciprocating compressor on NH3 (Ammonia). Complete with a Leroy Somer P 280 S-4 electric motor - 50 Hz - 110 kW - 1460 RPM, oil separator with a volume of 65 liters, pressure and safety switches/gauges and a sight glass. *Why choose for HOSBV? We are not only the largest used refrigeration specialist in Europe, but also, we deliver all equipment including an extensive test, warranty and an industrial cleaning. *Optionally we can also perform a new paint job and arrange the logistics.

